

## Flange socket connector - M12 female (F)

<b>Description:</b>					
Used for fixed I/O connecting such as panel and cabinet. Standard M12(female) threaded connection. 4, 5, 8-core are optional.					
<b>Features:</b>					
<ul style="list-style-type: none"> <li>■ Optional front/rear panel installation</li> <li>■ Customized cable lengths</li> </ul>					
<b>Technical Data</b>					
Cable jacket	Description	Type	Pin	Rated current/voltage	Dia. of cable
Brass zine nickel plating	Female 4-core rear panel installation	FO12.4-0/M16	4	4A/250V	0.25-1mm <sup>2</sup>
	Female 4-core front panel installation	FO12.4-0/M16/F	4	4A/250V	0.25-1mm <sup>2</sup>
	Female 5-core rear panel installation	FO12.5-0/M16	5	4A/60V	0.25-0.75mm <sup>2</sup>
	Female 5-core front panel installation	FO12.5-0/M16/F	5	4A/60V	0.25-0.75mm <sup>2</sup>
	Female 8-core rear panel installation	FO12.8-0/M16	8	2A/30V	Max.0.25mm <sup>2</sup>
	Female 8-core front panel installation	FO12.8-0/M16/F	8	2A/30V	Max.0.25mm <sup>2</sup>

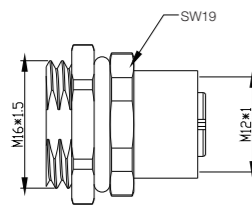
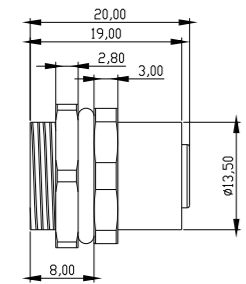


### Selection Instructions

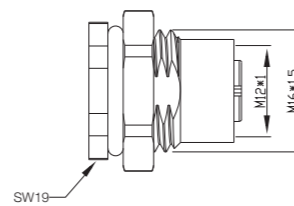
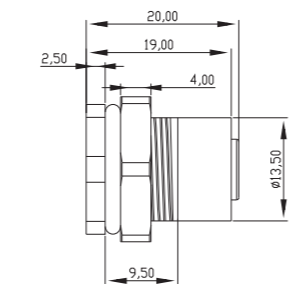
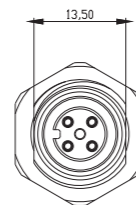
## FO12.4 - 0/M16

Attn: Standard

### Dimensions



Rear panel installation



Front panel installation

## Flange socket connector - M12 male (M)

<b>Description:</b>					
Used for fixed I/O connecting such as panel and cabinet. Standard M12(male) threaded connection. 4, 5, 8-core are optional.					
<b>Features:</b>					
<ul style="list-style-type: none"> <li>■ Optional front/rear panel installation</li> <li>■ Customized cable lengths</li> </ul>					
<b>Technical Data</b>					
Cable jacket	Description	Type	Pin	Rated current/voltage	Dia. of cable
Brass zine nickel plating	Male 4-core rear panel installation	F12.4-0/M16	4	4A/250V	0.25-1mm <sup>2</sup>
	Male 4-core front panel installation	F12.4-0/M16/F	4	4A/250V	0.25-1mm <sup>2</sup>
	Male 5-core rear panel installation	F12.5-0/M16	5	4A/60V	0.25-0.75mm <sup>2</sup>
	Male 5-core front panel installation	F12.5-0/M16/F	5	4A/60V	0.25-0.75mm <sup>2</sup>
	Male 8-core rear panel installation	F12.8-0/M16	8	2A/30V	Max.0.25mm <sup>2</sup>
	Male 8-core front panel installation	F12.8-0/M16/F	8	2A/30V	Max.0.25mm <sup>2</sup>

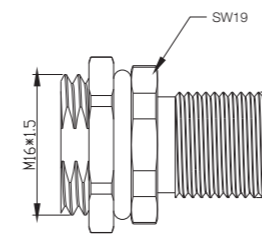
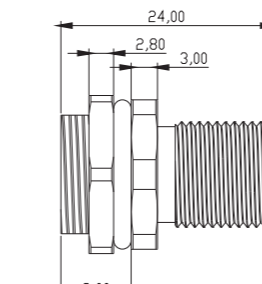


### Selection Instructions

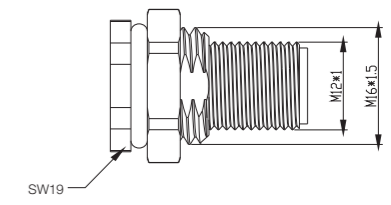
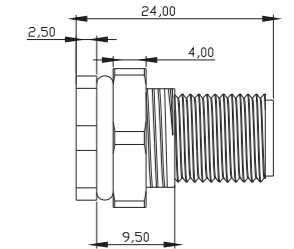
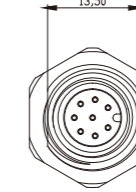
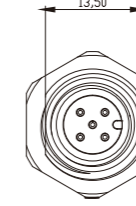
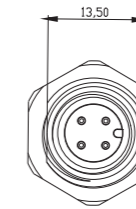
## F12.4 - 0/M16

Attn: Standard

### Dimensions



Rear panel installation



Front panel installation